

# Diffusion Tube Exposure Details Sheet

School Location or Pupil Name.....

Street Number: .....

Street Name: .....

Town: .....

Tube Number: .....

Start Date (dd/mm/yy): .....

Start Time (xx:xx): .....

Finish Date (dd/mm/yy): .....

Finish Time (xx:xx): .....

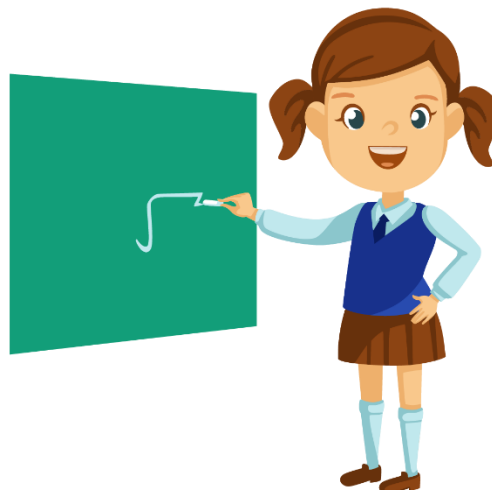
Description of tube location

.....

.....



# Teacher Instructions for Diffusion Tube Monitoring



**Before putting out your diffusion tubes please consider the following points:**

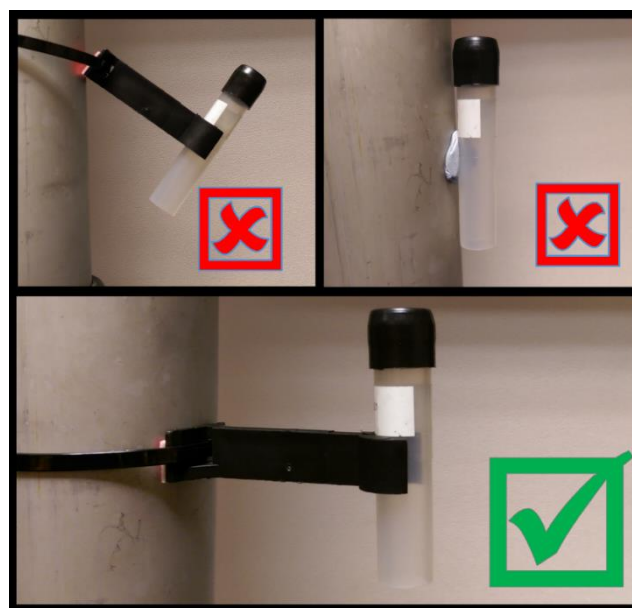
- Where would you like to monitor?
- Does the location have a suitable place to attach the diffusion tube securely?
- Have you chosen varied locations for a contrast in results, remember you are likely to get higher results closer to roads and lower results in open spaces such as the playing fields?
- Consider safety e.g. will you and your pupils be walking through the car park?

## Putting the tubes out

**Once you have chosen your monitoring locations, please follow the instructions below to place your diffusion tubes out and start your monitoring study.**

**Step 1:** Find a suitable location for your tube. Ideally the tube should be somewhere open not near any bushes, trees, or central heating vents.

**Step 2:** Feed the cable tie through the clip and tie around drain pipe or lamppost. The clip should be placed approximately 2m in height above the ground. Make sure the clip is in an upright position against the pipe or lamppost. Ideally you should not use ladders to minimise risk of injury to you or your pupils.



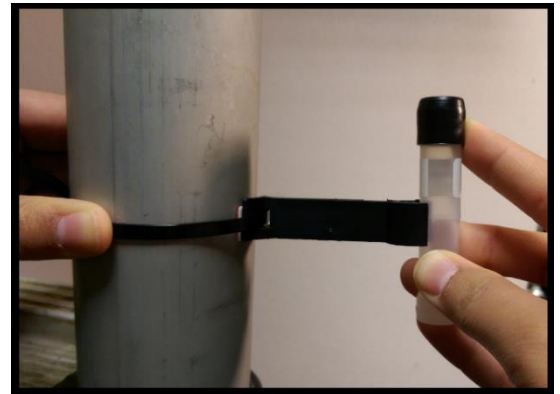
**Step 3:** Remove the white end cap from the diffusion tube and place the cap back in the bag. (**It's important you don't lose it as you will need this to re-cap the tubes before returning for analysis.** Ideally, keep all the caps together with the partially completed diffusion tube sample sheet.)



**Step 4:** Place the tube into the clip; you should hear a click when it's firmly in place. The coloured cap should be at the top and the open end at the bottom.

**Step 5:** Complete your sample information sheet and take a photograph of the tube. Take a photograph which shows a bit of the area around it.

**Step 6:** Place everything back in the bag, seal and keep somewhere safe.



**Step 7:** Put a note in your diary for when you will be removing and re-capping the diffusion tubes. Diffusion tubes can monitor for between 2-4 weeks, with 2 weeks being the minimum.

## Taking the tubes down

**Step 1:** Take another photograph of your tube and remove the tube from the clip. If your diffusion tube is missing, please put 'Missing' on your sample sheet for that tube location.

**Step 2:** Put the white cap back on and place in the bag.

**Step 3:** Complete End Date and End time on the sample information sheet.

**Step 4:** Gather all the capped diffusion tubes from your pupils and the monitoring locations. Ensure all your sample information is completed on your sample information sheet. All start and end dates are needed. Without these, the sample cannot be analysed. If you are not posting the tubes back the same day for analysis, then place the sealed bag of diffusion tubes in the fridge overnight.



# Checklist

## Putting the tubes out

- Have you followed the instructions for putting the tube out correctly?
- Have you taken a photograph of the tube location?
- Have you placed the end cap back in the bag?
- Have you completed the exposure information sheet?

## Taking the tubes down

- Did you take a photograph of your diffusion tube?
- Have you placed the white end cap back on the tube?
- Have you completed the exposure information sheet?
- Have you placed everything back in the bag for returning to school?

